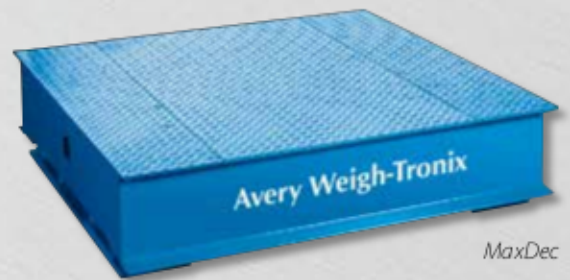




Avery Weigh-Tronix offers some of the best floor scales in the world – robust, accurate and built to last. With over 200 years of weighing industry expertise behind them, the floor scales are designed for maximum strength and flexibility and are suitable for every application. Avery Weigh-Tronix floor scales are easy to install, use and maintain, so they won't slow your business down.



MaxDec



DS

High quality floor scales for every application

Built for strength and reliability.

Avery Weigh-Tronix offers some of the most robust floor scales in the world — designed to perform well within the yield strength of the steel used. The virtually indestructible DS and MaxDec models utilize a unique self leveling chain link design, ideal for the harshest environments. The lower profile models (LP and ProDec) are designed for superior deck strength, reducing deck deformation when constantly loaded and unloaded.

Built for accuracy.

Avery Weigh-Tronix floor scales can deliver exactly the accuracy you require for your particular application. Scales are fitted with the Weigh Bar® weight sensor, which allows the scales to remain accurate to 5,000 divisions while providing outstanding side/end loading protection and shock loading protection, common in most industrial environments.

Built for easy loading.

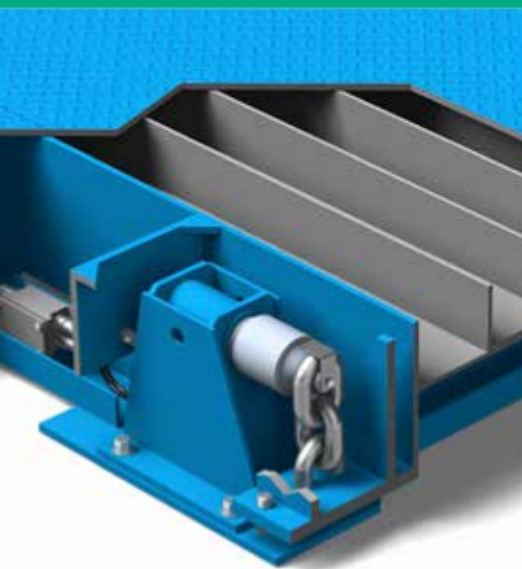
All Avery Weigh-Tronix floor scales are available with ramps to allow loads to be driven or wheeled on easily and safely. The ProDec and Deck Scale can also be pit mounted for situations where space is an issue. The LP, low profile scale and the drum weigher, are designed to be low to the ground, and do not need to be pit mounted, minimizing installation time and allowing the scale to be moved when requirements change.

Avery Weigh-Tronix



Cargo Scale

Full Side Load Protection



Once bolted to the ground the unique chain link design used on the DS, MaxDec and the LP range, makes bent feet and damaged loadcells a thing of the past. These scales are very low maintenance due to their ability to allow the top deck to swing out of the way, taking all the side forces away from the weigh bars.