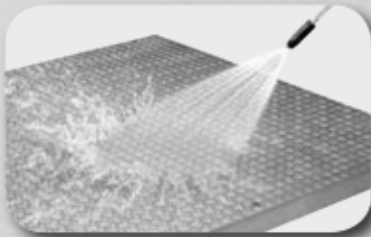
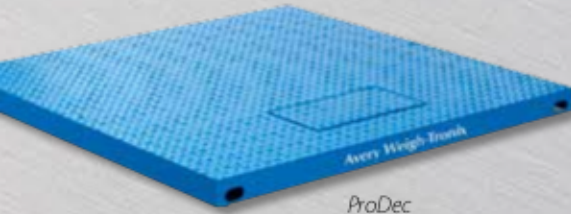


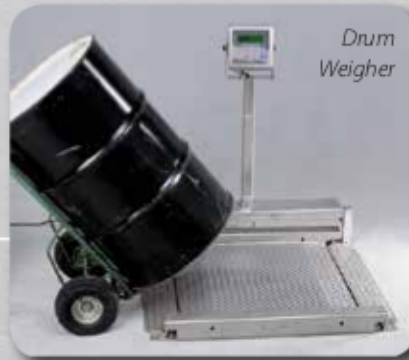
Avery Weigh-Tronix Floor Scales



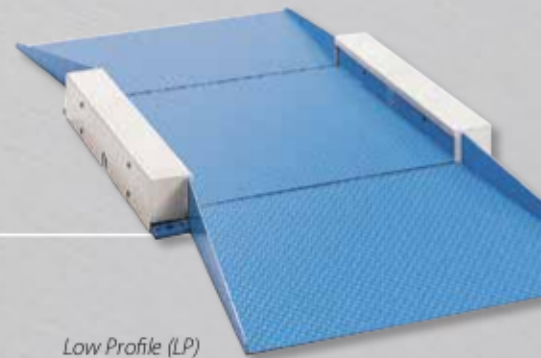
DS, ProDec, Drum Weigher and Low Profile models available in stainless steel for washdown applications.



ProDec



Drum Weigher



Low Profile (LP)

Built for safety.

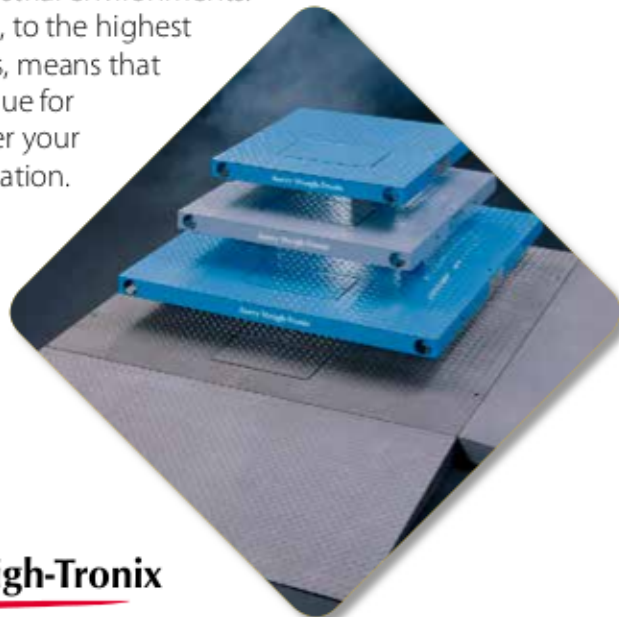
Avery Weigh-Tronix floor scales are also designed with workplace safety in mind. The non-slip scale surface and feet, combined with the low profile or pit mounted options, ensure that the loading, weighing and unloading processes are as risk-free as possible.

Built for every application.

From small (24" x 24") to large (120" x 120") and all the way up to 100,000 lb capacity, there is an Avery Weigh-Tronix floor scale for virtually every application. If one of our standard sizes doesn't work, the unique design of the ProDec allows us to supply it in custom sizes, for special applications or existing pits.

Built to last.

From the tough, anti-slip safety tread plate to the hard wearing powder coat finish, Avery Weigh-Tronix scales are built for today's unrelenting industrial environments. A rugged design, to the highest quality standards, means that you get great value for money, no matter your budget or application.



Avery Weigh-Tronix



The Avery Weigh-Tronix Weigh Bar® Accuracy and strength in one unique package.

The Weigh Bar® is designed to overcome the shortcomings of the load cell and to provide the user with a rugged, highly reliable and linear load sensing device at a reasonable cost.

- NTEP approved to 5000 d
- Immune to side loads, end loads and twisting
- Inherent strength and overload protection in the design with gauges on the outside of the bar
- More robust than a shear beam load cell for a given output
- Lower failure rate versus load cells: less prone to damage from impact and maximum design protection from vibration



Failure Rate of Weigh Bar® vs. load cells